



EXMAS
INTERNATIONAL

EXMAS INTERNATIONAL SOLUTIONS LTD.

➤ **Location:**

Landmark Plaza, Argwings Kodhek Rd, Nairobi

➤ **Company Registration NO:**

REF NO: PVT-BEUEBD5V

➤ **Company KRA Pin**

P052352851B

➤ **Phone No:**

+254714073647 or +254725415177

➤ **Email address**

info@exmasinternationalsolutions.com
director@exmasinternationalsolutions.com

➤ **website**

www.exmasinternationalsolutions.com



IPC, see page DE10-3



IPC2, see page DE10-4

Description	Page
IPaCS™ Equipment Overview	2
Integrated Power Center (IPC)	3
Integrated Power Center 2 (IPC2™)	
<ul style="list-style-type: none"> • IPC2 • IPC2 Transformer Combo • Standard Transformer Combo Merchandise Configurations 	<p>4</p> <p>4</p> <p>5-6</p>
Integrated Equipment Sample Lineups	7

(IPACS) EQUIPMENT AND
 CONTROL SOLUTIONS **DE10**
 INTEGRATED POWER



Integrated Power and Control Solutions (IPACS) Equipment

IPaCS Equipment Overview

Integrated Power and Control Solutions (IPaCS™) Equipment Overview

The Square D® family of integrated equipment combines electrical distribution equipment, building controls and automation into a single factory-assembled and pre-wired enclosure. Our innovative, cost-effective, integrated solutions save valuable floor space, shorten construction cycle times and reduce installation and material handling costs.

Integrated lineups are tailored to customer specifications and can be customized to include third party components, such as building management automation and controls.

Integrated Power Center (IPC)

Custom-Designed Solution

For more complex designs, the Integrated Power Center allows for the integration of a variety of controls, including electrical distribution equipment, HVAC controls, lighting controls, power quality and power conditioning products, surge suppression and building management systems. As with all integrated solutions, they meet applicable codes and standards and are shipped to the site fully-assembled, completely pre-tested and ready to install. IPC sections are 84 in. (2134 mm) high x 10.25 in. (260 mm) deep. Widths vary depending upon customer specifications.

Integrated Power Center 2 (IPC2™)

The newest addition to the family of integrated solutions, the Integrated Power Center 2 (IPC2™) provides maximum flexibility to meet customers' specifications. Features include those found in the IPC and are provided in a free-standing enclosure that can be front and rear aligned when transformers are included. Enclosure options include NEMA 1, NEMA 1 with driphood and NEMA 3R.

IPC2 Transformer Combo

Ideally suited for projects having 600Y/347 V, 480Y/277 V and 208Y/120 V requirements. Available as a standalone solution or can be incorporated into an IPC or IPC2 line-up. The 42 in. (1067 mm) wide x 24 in. (610 mm) deep footprint will decrease space requirements by 40% or more.

Additional savings are realized on installation, material costs and material handling, shown in the table below.

IPC2 Transformer Combo—Savings Realized

	Stick-Built	Transformer Combo	Savings Realized
Estimated Installation Hours	26–32	3–6	23–26
Materials Saved	Associated pipe, wire and fittings	—	Associated pipe, wire and fittings
No. of Pieces Handled	20–30	1	19–29

The IPC2 Transformer Combo has been recognized by the electrical industry by winning the following awards:

- 2006 INNOVATION Award given by the Electrical Contracting Products magazine.
- 2006 Product of the Year Gold Medal Award given by the Consulting/Specifying Engineer magazine.

Integrated Power Center (IPC)

The custom-designed Integrated Power Center allows for greater design flexibility with the integration of a variety of controls, including:

- Electrical distribution
- Power quality
- Building automation
- Surge suppression
- Lighting controls
- HVAC controls

Integrated Power Centers are NEMA 1 rated and meet the requirements of CSA 22,2, No.31. As with all integrated solutions, IPCs are shipped to the site fully-assembled, completely pre-tested and ready to install. IPC sections are 84 in. (2134 mm) high x 10.25 in. (260 mm) deep; widths vary depending upon customer specifications.

Individual IPC configurations include NF, NQ or I-Line panel sections in full height, stacked or side-by-side arrangements. In addition, combination sections combine electrical distribution panels with equipment space for building controls.

Equipment space options include factory-installed lighting contactors in three configurations:

1. Unwired: Mounted in cell only
2. Line side wired: Line side of each pole is wired to a branch circuit breaker
3. Fully wired: Line side of each pole is wired to a branch circuit breaker, load side of each pole wired to a terminal block

Layout/Lead Time/Pricing:

Contact your nearest field sales office.

Shipping:

Integrated equipment line-ups are shipped as a factory-assembled, pre-wired system. Customers may specify single or multiple section shipping splits (some limitations apply). In addition, lineups may be ordered with or without factory-installed power cables.



Integrated Power Center



IPC Interior

Integrated Power and Control Solutions (IPACS) Equipment

Integrated Power Center 2 (IPC2™) and IPC2™ Transformer Combo



Integrated Power Center 2

Integrated Power Center 2 (IPC2™)

The IPC2 provides maximum design flexibility. In addition to the features found in the Integrated Power Center, IPC2 lineups are free-standing enclosures that can be front- and rear-aligned when transformers are included.

- NEMA 1, NEMA 1 with driphood and NEMA 3R enclosure options
- Free-standing sections that can be close-coupled to QED switchboards
- CSA C22.2, No. 31– Deadfront switchboard construction
- Seismically qualified to meet IBC and ASCE 7

Equipment space options include factory-installed lighting contactors in three configurations:

1. Unwired: Mounted in cell only
2. Line side wired: Line side of each pole is wired to a branch circuit breaker
3. Fully wired: Line side of each pole is wired to a branch circuit breaker, load side of each pole wired to a terminal block

Layout/Lead Time/Pricing:

Contact your nearest field sales office.

Shipping:

Integrated equipment line-ups are shipped as a factory-assembled, pre-wired system. Customers may specify single or multiple section shipping splits (some limitations apply). In addition, lineups may be ordered with or without factory-installed power cables.

IPC2 Transformer Combo

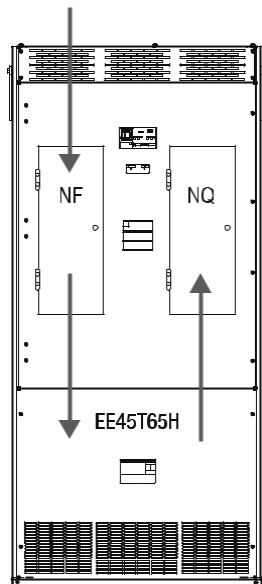
A member of the IPC2 family, the Transformer Combo has been recognized wide for its innovative design. It integrates panelboards, individually-mounted circuit breakers or lighting contactors with a dry-type transformer into one factory-assembled and pre-wired solution. All are housed in a space-saving 42 in. (1067 mm) wide x 91.5 in. (2324 mm) high x 24 in. (610 mm) deep enclosure.

The Transformer Combo is ideally suited for projects having 600Y/347 V, 480Y/277 V and 208Y/120 V requirements and is applicable where panels and a transformer are in close proximity. As a standalone solution, the Transformer Combo provides the flexibility to enter and/or exit the section from either the top or bottom. It can also be incorporated into an IPC2 lineup.



Transformer Combo

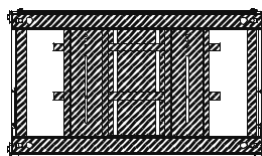
Catalogue No. IPC2TC-EE-C1



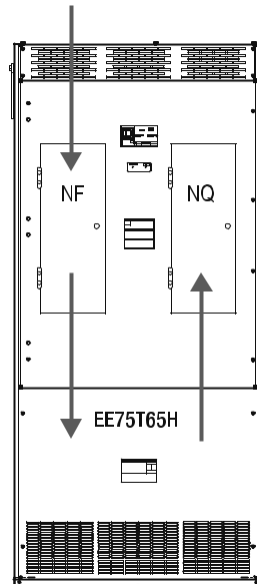
NF Panel
600Y/347V 3ph 4w
400A MLO 18kAIC
1 - 60A/3 (Transformer)
39 - 1PSO
Copper Bus
Ground Bus

NQ Panel
208Y/120V 3ph 4w
225 MLO 10kAIC
42 - 1PSO
Copper Bus
Ground Bus

Transformer
Type EE (Energy Efficient)
EE45T65H
600V - 208Y/120V
45kVA
150 C Temp Rise
Aluminium Windings
6 - 2.5% Taps; 2+ 4-



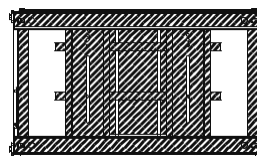
Catalogue No. IPC2TC-EE-C2



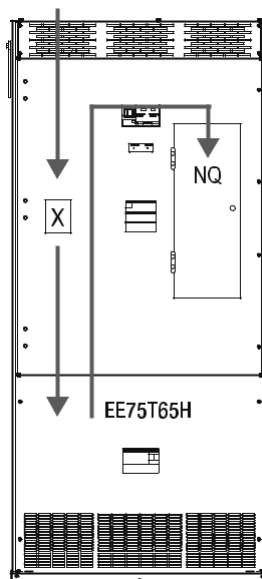
NF Panel
600Y/347V 3ph 4w
400A MLO 18kAIC
1 - 90A/3 (Transformer)
39 - 1PSO
Copper Bus
Ground Bus

NQ Panel
208Y/120V 3ph 4w
225 MLO 10kAIC
42 - 1PSO
Copper Bus
Ground Bus

Transformer
Type EE (Energy Efficient)
EE75T65H
600V - 208Y/120V
75kVA
150 C Temp Rise
Aluminium Windings
6 - 2.5% Taps; 2+ 4-



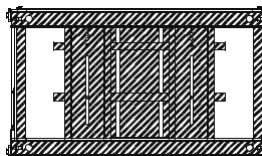
Catalogue No. IPC2TC-EE-C3



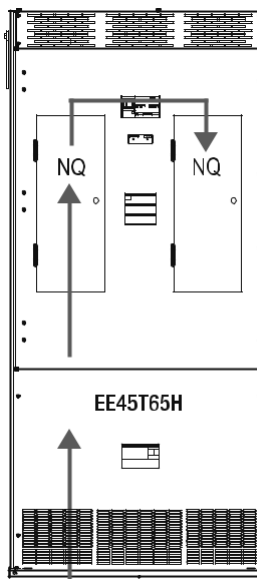
X
Transformer Primary Breaker
90A 3P 600V 18kAIC

NQ Panel
208Y/120V 3ph 4w
225 MLO 10kAIC
42 - 1PSO
Copper Bus
Ground Bus

Transformer
Type EE (Energy Efficient)
EE75T65H
600V - 208Y/120V
75kVA
150 C Temp Rise
Aluminium Windings
6 - 2.5% Taps; 2+ 4-



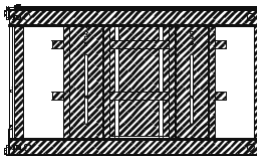
Catalogue No. IPC2TC-EE-C4



NQ Panel
208Y/120V 3ph 4w
225 MLO 10kAIC
42 - 1PSO
Copper Bus
Ground Bus
FT Lugs

NQ Panel
208Y/120V 3ph 4w
225 MLO 10kAIC
42 - 1PSO
Copper Bus
Ground Bus

Transformer
Type EE (Energy Efficient)
EE45T65H
600V - 208Y/120V
45kVA
150 C Temp Rise
Aluminium Windings



Note: All sections can be fed from top or bottom.

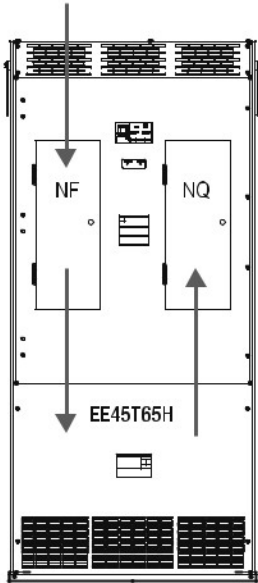
Integrated Power and Control Solutions (IPACS) Equipment

Standard Transformer Combo Merchandise Configurations

Catalogue No. IPC2TC-EE-C5

Catalogue No. IPC2TC-EE-C6

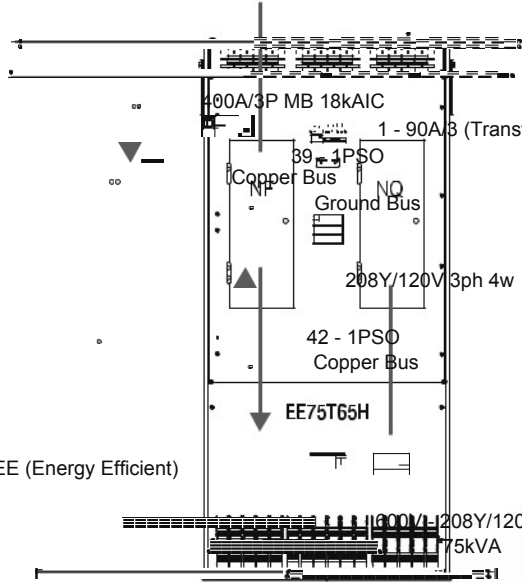
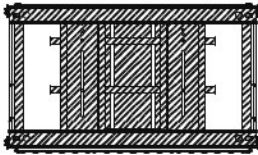
(IPACS) EQUIPMENT AND
 CONTROL SOLUTIONS **DE10**
 INTEGRATED POWER



NF Panel
 600Y/347V 3ph 4w
 400A/3P MB 18kAIC
 1 - 60A/3 (Transformer)
 39 - 1PSO
 Copper Bus
 Ground Bus

NQ Panel
 208Y/120V 3ph 4w
 225 MLO 10kAIC
 42 - 1PSO
 Copper Bus
 Ground Bus

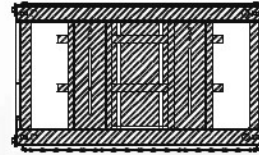
Transformer
 Type EE (Energy Efficient)
 EE45T65H
 600V - 208Y/120V
 45kVA
 150 °C Temp Rise
 Aluminium Windings
 6 - 2.5% Taps; 2+ 4-



NF Panel
 600Y/347V 3ph 4w
 400A/3P MB 18kAIC
 1 - 90A/3 (Transformer)
 39 - 1PSO
 Copper Bus
 Ground Bus

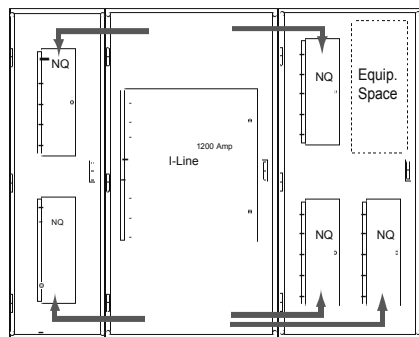
NQ Panel
 208Y/120V 3ph 4w
 225 MLO 10kAIC
 42 - 1PSO
 Copper Bus
 Ground Bus

Transformer
 Type EE (Energy Efficient)
 EE75T65H
 600V - 208Y/120V
 75kVA
 150 °C Temp Rise
 Aluminium Windings
 6 - 2.5% Taps; 2+ 4-

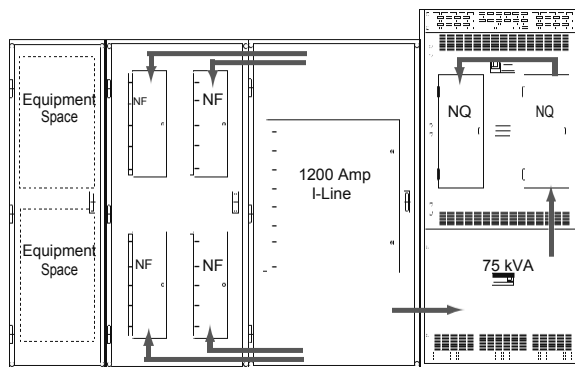


Integrated Power and Control Solutions (IPACS) Equipment

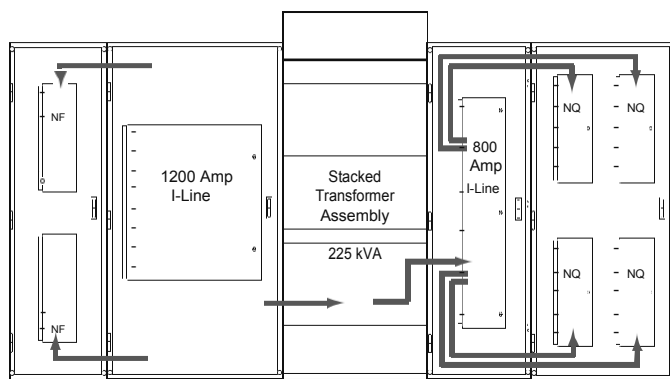
Integrated Equipment Sample Lineups



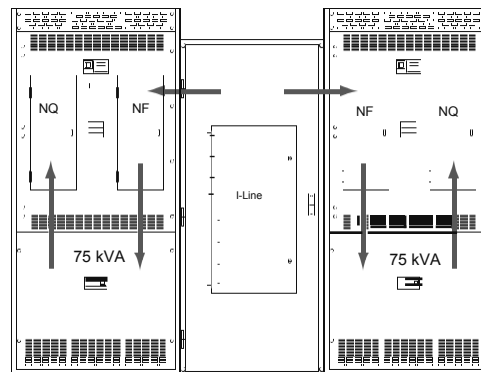
**Integrated Power Center
208Y/120 V**



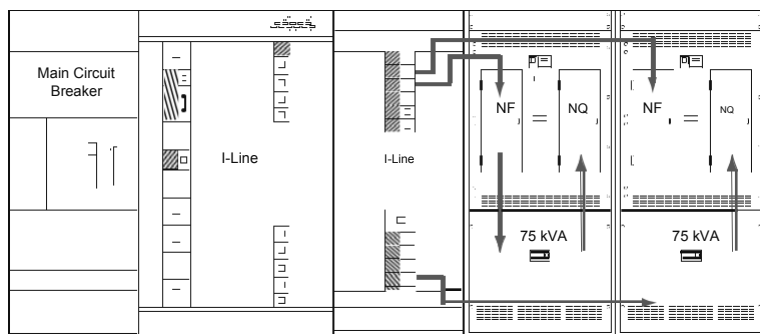
**Integrated Power Center with IPC2 Transformer Combo
600Y/347 V System and 208Y/120 V System**



**Integrated Power Center with Stacked Transformer
600Y/347 V System and 208Y/120 V System**



**IPC2 Transformer Combo and Integrated Power Center
600Y/347 V System and 208Y/120 V System**



**Switchboard and IPC2 Transformer Combo
600Y/347 V System and 208Y/120 V System**

DE10
(IPACS) EQUIPMENT AND
CONTROL SOLUTIONS
INTEGRATED POWER



This page is left intentionally blank.